



RSB
 Roundtable on
 Sustainable Biomaterials
www.rsb.org

ISEAL Community Member System Overview

Organisation Name	Roundtable of Sustainable Biomaterials (RBS)
Year	2023-24
Version	V2

Roundtable on Sustainable Biomaterials (RSB)

Roundtable on Sustainable Biomaterials is a collaborative network of global organisations advancing the transition to a bio-based and circular economy.

As the world unites to tackle the climate crisis, more companies are shifting from linear, fossil-based economies to circular, bio-based ones. However, even with the best intentions, this can still cause harm.

Together with our membership community, the Roundtable on Sustainable Biomaterials (RSB) has created a robust and credible sustainability framework, which we use as a foundation to collaboratively develop projects, knowledge and solutions that deliver positive impacts for people and planet.

1) The **STRATEGIES** our system employs to meet its sustainability objectives

RSB advances the transition to a bio-based and circular economy – creating a world in which climate change has been mitigated, biodiverse ecosystems restored and livelihoods enhanced.

Guided by our sustainability framework, the RSB Principles & Criteria, we do this by leveraging our three core areas:

- 1) **Membership** – enabling collaboration for greater impact
- 2) **Programmes** – building capability to make change happen
- 3) **Certification** – providing clarity on best practice

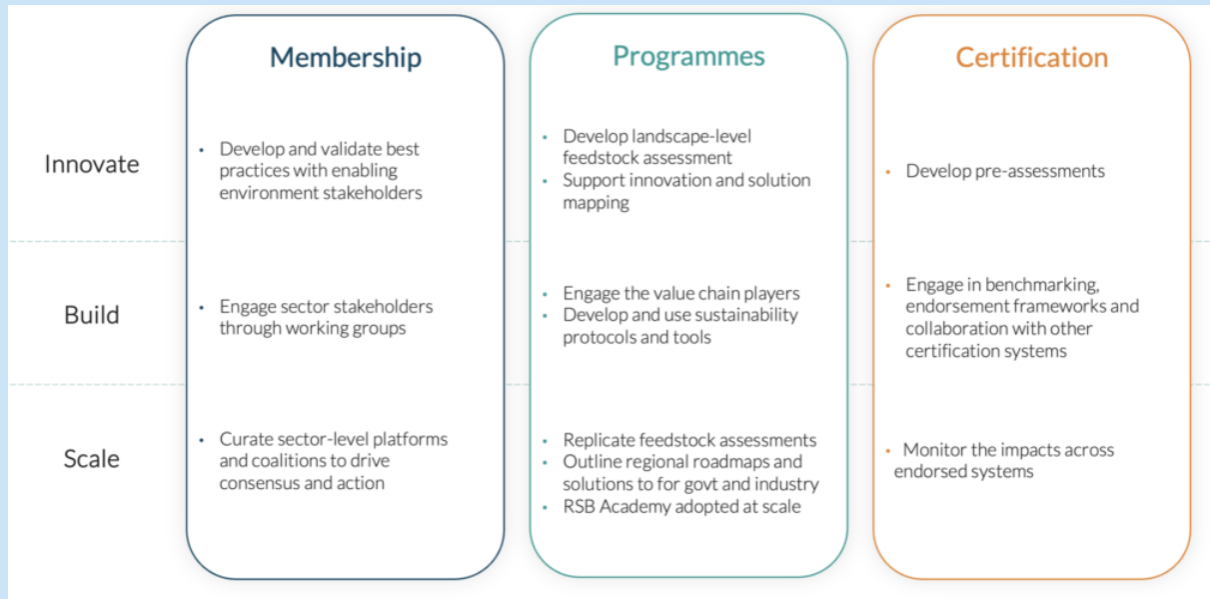
How we leverage our three core areas?

RSB understands systematic and meaningful transformation to a biocircular economy as a journey of three stages:

- 1) **Innovate**: where business visionaries start taking decisive action
- 2) **Build**: where collaboration increases as sustainability becomes a differentiator

3) Scale: where critical mass is achieved and an enabling environment is established

RSB’s activities leverage our three core work areas at each stage in the journey of change:



2) A description of the STANDARD or TOOL (delete as appropriate) that our system has developed

RSB Sustainability framework

RSB’s sustainability framework – underpinned by 12 key principles and their underlying criteria – is the world’s most rigorous standard for sustainable production in the biocircular economy.

Application of our sustainability framework demonstrates a commitment to just and sustainable development, and the realisation of the United Nations Sustainable Development Goals (UN SDGs).

RSB’s 12 Principles & Criteria (P&C)

12 Principles & Criteria are the core of our globally recognised sustainability framework – describing the best of social, legal, environmental and management practice for sustainable production in the biocircular economy.

Each principle is supported by criteria, requirements and indicators. The criteria list the necessary conditions to meet each principle, and who must comply with them. Requirements and indicators give details to support users with their implementation.

Read the RSB’s 12 Principles & Criteria: [RSB Principles & Criteria](#)

Framework development

RSB’s decision-making structure – based on consensus among our membership community – ensures that our sustainability framework is the most credible approach to addressing key social, environmental and management issues in a comprehensive way.

RSB's membership community is a growing global movement of over 130 industry and sector leaders, environmental and civil society organisations, academic institutions, and UN and government bodies.

As an ISEAL Code Compliant Member, we have a formal process for how our sustainability framework is developed, adapted and reviewed. Revisions require a formal consultation, in line with the ISEAL Codes of Good Practice, and approval by RSB members.

Standards and procedures

RSB's library contains all documents relating our sustainability framework, and our standards and procedures. Among which you can find the following standards and tools.

- RSB Standard For Advanced Fuels
- RSB Standard for Advanced Products
- RSB Standard for EU market access
- RSB Standard for Japan FIT
- RSB Standard for ICAO CORSIA
- GHG tool
- TechnoEconomic Analysis tool (TEA tool)
- Screening Tool
- Risk Assessment tool
- Audit checklist tool

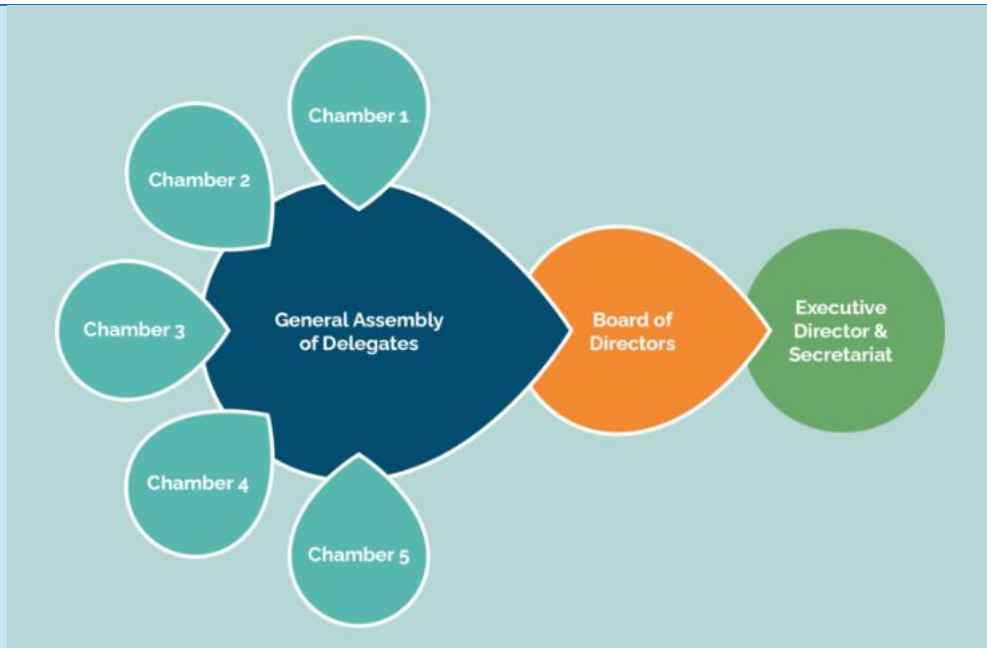
These documents demonstrate how our Principles & Criteria work in practice – describing how to responsibly produce biomass, fuel and material products from bio-based and recycled carbon, as well as renewable energy.

3) How we maintain **RESPONSIBILITY for decisions taken about and by our system**

RSB Procedure for Development and Modification of RSB Standards, RSB Procedures and RSB Guidance (RSB-PRO-15-001).

The objective of RSB-PRO-15-001 is to describe how RSB Standards, RSB Procedures and RSB Guidance are developed and modified. The process outlined in this document is intended to be open and transparent in compliance with the ISEAL (International Social and Environmental Accreditation and Labeling) Code of Good Practice for Setting Social and Environmental Standards.

The ultimate authority for approving development and modification of RSB's Standards is the RSB's multi-stakeholder Assembly of Delegates (RSB Assembly). RSB procedures are approved by the Board of Directors (RSB Board) and RSB guidance documents are approved by the RSB Executive Director. The Secretariat is empowered to handle minor modifications and is the entity that oversees the development and modification process, including consultation, field testing, and preparation of draft documents, in consultation with relevant technical standards working groups.



4) How our system's design demonstrates a **COMMITMENT TO IMPROVEMENT**

RSB Framework development:

The biocircular economy is constantly evolving, so our approach needs to evolve too. We work with our members to adapt our sustainability framework and supporting standards.

RSB's approach to standard development ensures the continuous improvement of our approach and its ongoing relevance for industry, NGOs, academia and policy-makers who are looking to implement sustainability best practice for the biocircular economy.

The following ensure the RSB's commitment to improvement:

The annual RSB **standards development workplan**. [RSB Standards Workplan 2024](#)

The RSB **process 15-001 RSB Procedure For Development And Modification Of RSB Standards, RSB Procedures And RSB Guidance sets a method for:**

- any updates to RSB standards, procedures, guidance and guidelines,
- proposals for modifications,
- and consultations of any of the beforementioned

RSB is a proud **ISEAL Code Compliant member**, meaning that we have demonstrated compliance with ISEAL's rigorous Codes of Good Practice on Standard Setting, Assurance and Impact for effective and credible sustainability systems.

5) How our standard or tool is monitored and reviewed to ensure its **RELEVANCE**

The RSB Framework development:

- [15-001 RSB Procedure For Development And Modification Of RSB Standards, RSB Procedures And RSB Guidance](#)
- [RSB Standards Workplan 2024](#)

See the previous section for more details on the RSB Framework development:

The RSB assembly of delegates:

RSB's Assembly of Delegates is the highest decision-making body of the organisation.

The Assembly of Delegates consists of three elected representatives, or Delegates, for each of our five membership chambers: Chamber 1 (Growers & Producers); Chamber 2 (End Users, Blenders, and Investors); Chamber 3 (Social Organisations); Chamber 4 (Environmental Organisations); and Chamber 5 (UN, Government, and Research). This gives each chamber the same weight and influence in decision-making.

Delegates represent their chamber at assembly meetings, where they engage with other chambers' Delegates to discuss governance issues and standard development – and in some cases to vote. The Assembly also approves modifications to the RSB Principles & Criteria and appoints the RSB Board of Directors.

Read more on this: [The RSB assembly of delegates](#)

The RSB annual conference

Our flagship event. RSB members and guests from our broader stakeholder community come together in an event full of insightful and interactive sessions that included discussions and presentations on hot topics as we learnt from the pioneers who are lighting the way towards a bio-based and circular economy.

Read more on this: [RSB Annual Conference 2023](#)

The RSB standards working groups

The RSB Board may set up Standards Working Groups (SWGs) in order to support the Secretariat with standard development activities such as modifications, development of new standards or guidance on standards.

The SWG shall strive to achieve a balanced representation of opinions and expertise from the RSB membership. Experts of the SWGs will be nominated by RSB members and Non-member can participate in the meetings as observers.

The General Standards Working Group (GSWG), established by the RSB Board, is a group of continued existence to support the RSB Secretariat in the ongoing standards work. Additionally, the RSB Board may also establish additional SWGs for a specific topic or need.

Read more on this: [15-001 RSB Procedure For Development And Modification Of RSB Standards, RSB Procedures And RSB Guidance](#)

The RSB platforms

Through RSB's member platforms, our multi-stakeholder community comes together to develop new knowledge and guidelines that will advance the bio-based and circular economy by:

- Developing expertise and solutions on the most relevant topics and technologies shaping biocircular economy development.
- Sharing wisdom in a pre-competitive space to raise sustainability ambition and action together.
- Shaping revisions to the RSB standard and certification system to provide a continuously developed model of best practice.

The RSB platforms:

- RSB SAF Policy Platform
- RSB Book & Claim Platform
- RSB Sustainable Biomass Policy Platform
- RSB Sustainable Marine Fuel Platform
- RSB Power-to-X Platform
- Sustainable Airports Platform

Review our membership platforms: [RSB Platforms](#)

The RSB membership

RSB's membership community is a space for leaders, innovators and pioneers to activate their ambition for a net-positive world.

RSB members include growers and producers of next-generation fuels and materials to the end-users, blenders and investors of these products, as well as non-profit social organisations to non-governmental environmental organisations, and high-level public policy institutions, academia and research institutions.

Our members, including RSB, benefit from association with the world's most credible sustainability framework for advancing the biocircular economy, and have direct input into its continued development.

Read more and [Meet our members](#).

6) How the standard or tool is **IMPLEMENTED**

The RSB standards come to life in diverse ways and manners where their principles and criteria are implemented:

A. Through certification, thanks to the RSB impact assessment processes and documents:

RSB Impact Assessment Guidelines

These guidelines are designed to help operators understand the RSB environmental and social impact assessment and management process as well as to provide guidelines on the RSB stakeholder engagement process. The guidelines will help users to navigate through the various processes required to complete the RSB impact assessment. These guidelines may also be used by the auditor to get a better understanding of key aspects to be considered during the certification process.

The RSB Screening Tool

This one is an interactive exercise intended to help operators seeking certification to identify: a) the social and environmental aspects relevant to their operations which will need to be more closely monitored, and b) when a more detailed study or assessment of a particular aspect of the standard is required

Specialist impact assessments included in the RSB:

- RSB Social Impact Assessment (SIA) Guidelines, RSB-GUI-01-005-01
- RSB Food Security Guidelines, RSB-GUI-01-006-01
- RSB Conservation Impact Assessment Guidelines, RSB-GUI-01-007-01
- RSB Soil Impact Assessment Guidelines, RSB-GUI-01-008-01
- RSB Water Assessment Guidelines, RSB-GUI-01-009-01
- RSB Guidelines on Water Rights and Social Impacts, RSB-GUI-01-009-02
- RSB Guidelines for Land Rights, RSB-GUI-01-012-01

B. Through RSB programmes

Through the lens of our globally-recognised sustainability framework, RBS provides unique approaches to assessing and implementing policy, projects and operations.

RSB landscape level programmes

RSB's landscape-level programme (LLP) is an integrated approach that supports sectors to transition from fossil resources and transform in a sustainable way, ensuring that this development adequately covers any social and environmental risks that come with using renewable resources and is validated by regional stakeholders. Read more about [RSB landscape-level programme](#).

RSB partner projects

RSB is able to leverage its sustainability framework to develop best practice, new knowledge and advancements for the bio-based and circular economy and disseminate them globally.

The current projects in our portfolio below are funded by the European Union through the Horizon Europe research and innovation programme, and aim to tackle climate change, achieve the SDGs and boost the EU's competitiveness and growth. Read more about [RSB partner projects](#).

RSB advisory services

The RSB sustainability framework forms the backbone of our advisory services – complemented by a suite of supporting tools – and led by a team of biocircular economy experts with skills across lifecycle analysis, feedstock and raw material sustainability, supply chain, preparation for certification, and much more. Read more about [RSB advisory services](#).